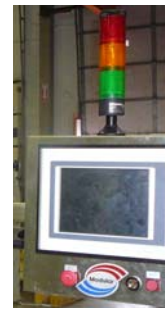


MPS-SC-72 SLAT COUNTER



The SC-72 Slat Counter uses 42" slats to fill 12-20 bottles per index cycle.

cGMP design concepts were at the top of our design specification. The SC-72 will meet all the most stringent QA requirements and is easy to operate and change over.

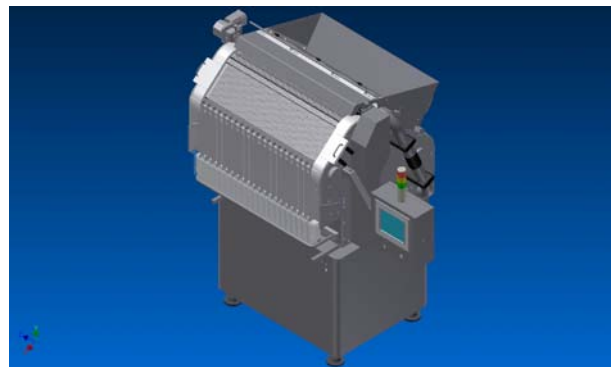
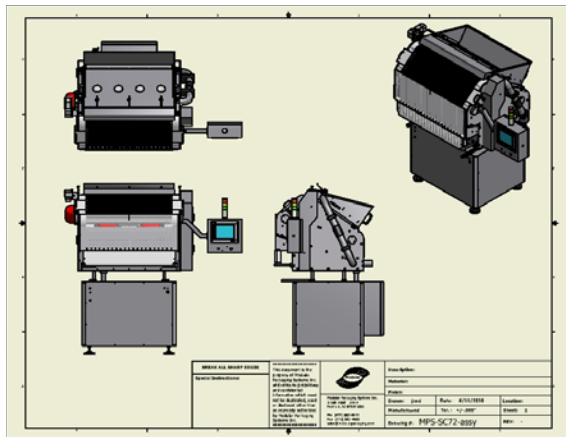
An AC motor controlled by an intelligent VFD is used to stop/start the machine at high speed allowing for minimum blanks and excellent accuracy. A mechanical safety clutch prevents motion in the event of a machine jam.

An independent AC motor and multiple vibrator controls allow for plenty of adjustment to optimize fill accuracy. Advanced designs in drives, bearings, sprockets, and contact part assemblies set a new standard for all machines.

State-of-the-art machine controls provide ease of use for all levels of interface with the machine

STANDARD FEATURES

- UP TO 240 BPM (BASED ON 100 COUNT 20 DROP SLAT)
- 100% ACCURACY
- 12 -20 DROP FUNNELS (Bottle Diameter Determined, Custom Designed)
- cGMP DESIGN
- NO TOOL REMOVAL FOR PRODUCT CONTACT PART ASSEMBLIES
- AC DRIVE MOTOR WITH VFD
- ADVANCED B&R POWER PANEL and AUTOMATION CONTROLLER
- 72 SLATS PER PRODUCT CONFIGURATION
- HOPPER LEVEL PROXIMITY SENSOR
- VARIABLE SPEED TOP BRUSH
- MULTIPLE DUST EXTRACTION POINTS
- STATIC ELIMINATOR
- BOTTLE COUNT VERIFICATION – IN and OUT
- BOTLLE INFEEED AND BACKUP DETECTION
- PNEUMATIC BOTTLE INDEXING SYSTEM (STANDARD)
- LARGE USER FRIENDLY TOUCH SCREEN INTERFACE (COLOR) – 15” HIGH RESOLUTION
- MACHINE PARAMETER RECIPE STORAGE
- MULTI-LEVEL PASWORD PROTECTED SCREEN ACCESS – with LOGIN management
- EXTENSIVE MACHINE DIAGNOSTICS
- MOTORIZED HEIGHT ADJUSTMENT
- SAFETY INTERLOCKS
- BOTTLE HEIGHT RANGE FROM 2” TO 10”



6 ASPEN DRIVE, RANDOLPH, NJ 07869 – 973-970-9393